

WEST SHORE LAKE PONTCHARTRAIN PROJECT

VIRTUAL PUBLIC MEETING
OCTOBER 21, 2020

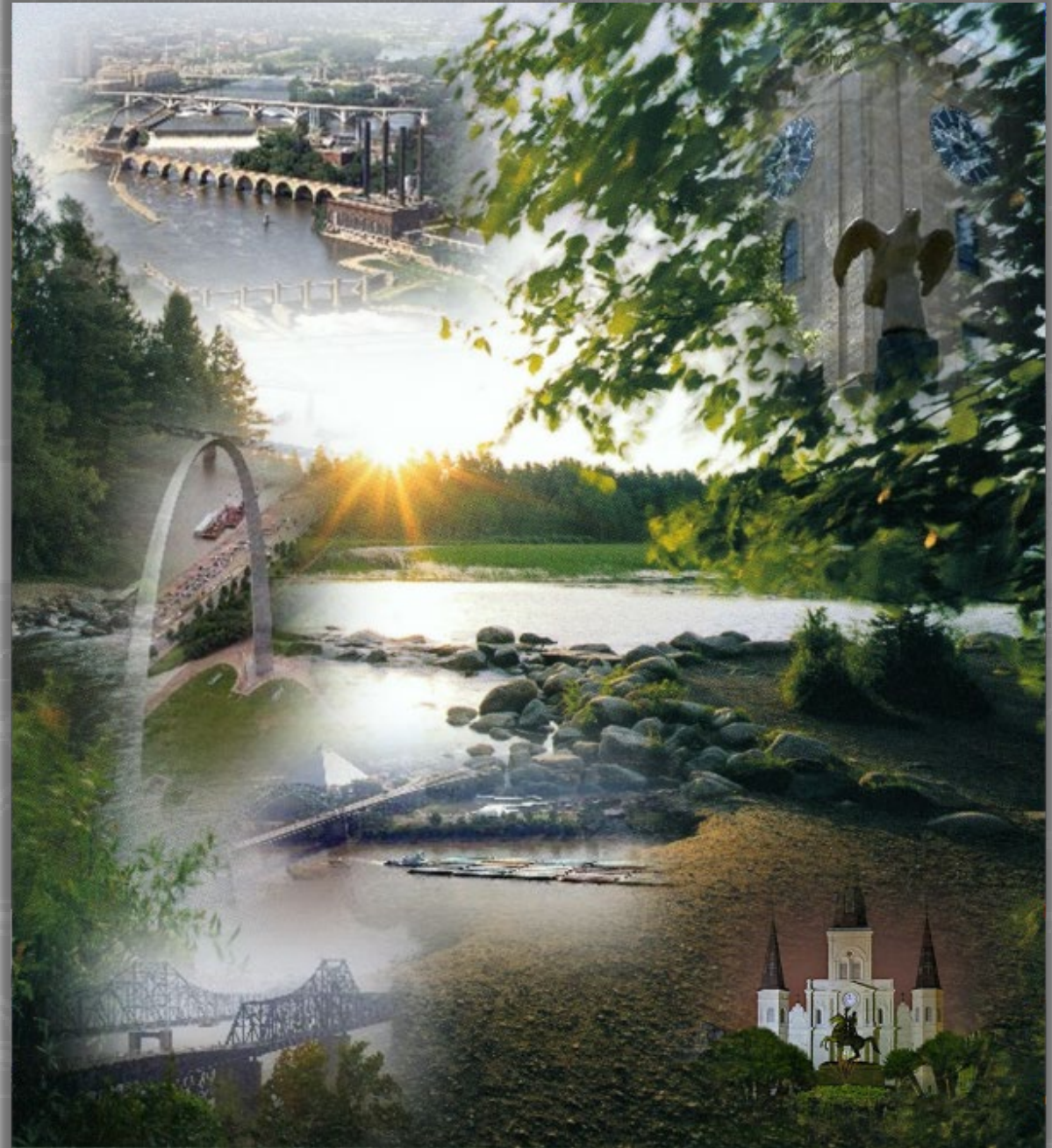
Chris E. Gilmore
Sr. Project Manager



US Army Corps
of Engineers®



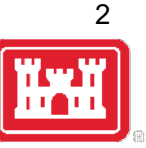
BUILDING STRONG®
and Taking Care of People!





WEST SHORE LAKE PONTCHARTRAIN

PROJECT OVERVIEW



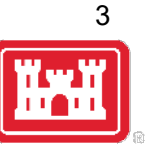
- Authorized as part of the Bipartisan Budget Act of 2018
 - Public Law 114-322; Section 1401(3)(5)
 - \$760M appropriation (includes mitigation, design, construction, etc.)
- Authorized as a Hurricane and Storm Damage Risk Reduction System project
- Coastal Protection and Restoration Authority and Pontchartrain Levee District are the non-Federal Sponsors (NFS)
- Cost share
 - 65% Federal (\$494M)
 - 35% non-Federal (\$266M)
- Fully funded upfront by Federal Government, with 30-yr payback period for NFS's portion





WEST SHORE LAKE PONTCHARTRAIN

PROJECT OVERVIEW

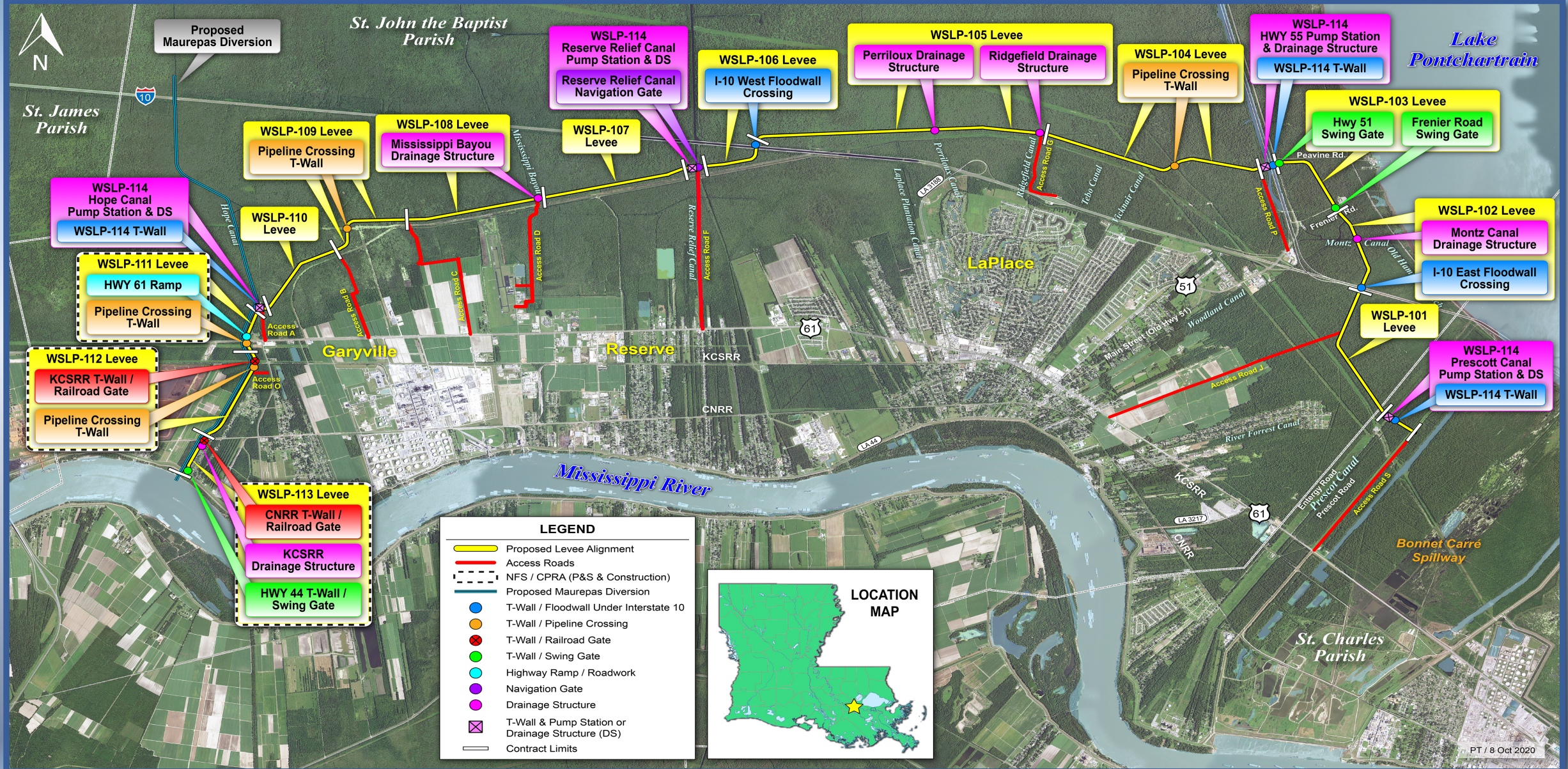


- Alignment is approximately 23 miles in length
 - St. Charles Parish = 0.5 miles
 - St. John Parish = 18.0 miles
 - St. James Parish = 4.5 miles
- The project includes 4 pump stations, 1 navigation gate, 8 drainage structures, 3 gated road crossings, 2 railroad gates, approximately 35 utility relocations, 200+ culvert valves / gates, and raising / floodproofing of a limited number of structures.
- 7.0 – 9.0 million cy of embankment material needed for levee construction.
- In excess of 1,000 acres of new right of way will need to be acquired.
- Habitat impacts will require mitigation for approximately 1,000 AAHU's
- Project Website - www.mvn.usace.army.mil/About/Projects/West-Shore-Lake-Pontchartrain/
 - Google “West Shore Lake Pontchartrain”





West Shore Lake Pontchartrain





WEST SHORE LAKE PONTCHARTRAIN

TENTATIVE *DELIVERY PLAN FOR THE PROJECT*



| Contract ID | Description | Elevations 2020/2070 | Solicitation |
|-------------|--|-------------------------|--------------|
| WSLP 101 | Levee – approx. 1.8 miles of levee | 15/19 | 1Q 2021 |
| WSLP 102 | Levee (approx. 1.0 mi.), Floodwall (approx. 500 ft), Drainage Structure(s) | 15/19 | 3Q 2021 |
| WSLP 103 | Levee (approx. 1.0 mi.), Floodwall (approx. 500 ft), Flood Gate | 15/19 | 3Q 2021 |
| WSLP 104 | Levee (approx. 2.5 mi.), Floodwall (approx. 500 ft), Utility Crossings | 14/18 | 2Q 2021 |
| WSLP 105 | Levee (approx. 3.0 mi.), Floodwall (approx. 500 ft), , Drainage Structure(s) | 11.5/17.5 | 2Q 2021 |
| WSLP 106 | Levee (approx. 0.75 mi.), Floodwall (approx. 500 ft), | 10/17 | 3Q 2021 |
| WSLP 107 | Levee (approx. 1.5 mi.) | 10/17 | 1Q 2021 |

Note: Project requirements and completion dates may be subject to change as designs are refined and impacts quantified.

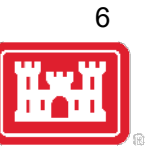


BUILDING STRONG®
and Taking Care of People!



WEST SHORE LAKE PONTCHARTRAIN

TENTATIVE *DELIVERY PLAN FOR THE PROJECT*



| Contract ID | Description | Elevations 2020/2070 | Solicitation |
|-------------|--|-------------------------|--------------|
| WSLP 108 | Levee (approx. 1.3 mi.), Floodwall (approx. 500 ft), Drainage structure(s) | 10/17 | 2Q 2021 |
| WSLP 109 | Levee (approx. 1.0 mi), (approx. 500 ft), Utility Crossings | 10/17 | 2Q 2021 |
| WSLP 110 | Levee (approx. 1.0 mi) | 10/17 | 1Q 2021 |
| WSLP 111* | Levee (approx. 0.5 mi), Highway Ramp, Utility Crossings | 10/17 | 3Q 2021 |
| WSLP 112* | Levee (approx. 1.0 mi), Rail Road Gate, Floodwall (approx. 500 ft), Utility Crossings | 8.5/16 | 3Q 2021 |
| WSLP 113* | Levee (approx. 0.5 mi), Floodwall (approx. 500 ft), Rail Road Gate | 8.5/16 | 3Q 2021 |
| WSLP 114 | Pump Stations (2 – 800 cfs and 2 – 2,000 cfs) | Varies | 3Q 2021 |

Note: Project requirements and completion dates may be subject to change as designs are refined and impacts quantified.

*Designed and constructed by CPRA



BUILDING STRONG®
and Taking Care of People!



WSLP PUMP STATION AND DRAINAGE STRUCTURES AND CANALS

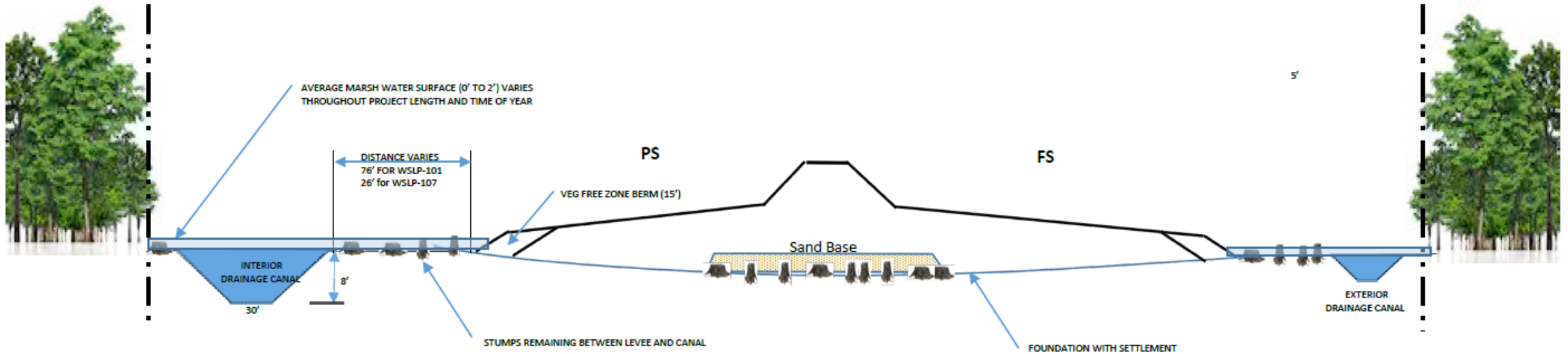


- Pump Stations
 - Hope Canal - 800 cfs
 - Reserve Canal - 2,000 cfs
 - I-55 - 2,000 cfs
 - Prescott Canal - 800 cfs
- Drainage Structures
 - 25 total openings in 8 drainage structures
- Drainage Canals
 - Interior: 100 ft top width; 30 ft bottom width; 8 ft deep
 - Exterior: 40 ft top width; 10 ft bottom width; 5 ft deep



BUILDING STRONG®
and Taking Care of People!

WEST SHORE LAKE PONTCHARTRAIN HSSDR PROJECT



TYPICAL FINAL PROJECT FOOTPRINT





WSLP - St James Parish





ST. JAMES PARISH STATUS



- Currently authorized project consists of:
 - Ring levees around Gramercy and Grand Point
 - Over 200 flap valves on the culverts under Hwy 3125
 - Flood proofing of a small number of structures
- Working with the NFS and the Parish to investigate additional alternatives to address concerns and risks associated with the numerous flap valves and the use of Hwy 3125 as a risk reduction levee.





WEST SHORE LAKE PONTCHARTRAIN

GENERAL STATUS



- Levee construction reaches have been optimized to maximize construction access
 - Currently have 13 levee contracts and 1 pump station contract
 - St. James contract breakdown will be determined in the near future
- Continue to coordinate with CPRA regarding design and construction of the west alignment and the State's Maurepas Diversion Project
- Detailed designs for all reaches underway
- Construction contracts currently scheduled to begin to be advertised in 2021
- Real Estate efforts on-going
- All environmental complete
 - Mitigation plans being optimized





WEST SHORE LAKE PONTCHARTRAIN MISCELLANEOUS CONTRACTS



- Currently Plan to issue several smaller contracts for various pre-construction efforts
- Stock pile contracts
 - Borrow Stockpile Contract #1 – On-going
 - Borrow Stockpile Contract #2 – On-going
 - Sand Stockpile Contract – scheduled to be advertised in October 2020
- Potential Future Contracts
 - Sand base Placement
 - Access Road Construction Contract(s)
 - Additional vegetation clearing contract(s)





LEVEE BORROW REQUIREMENTS



- Estimating a need of about 7.0M – 9.0M cubic yards of levee material for construction
- Bonnet Carre' Spillway (BCS)
 - BCS currently has 3.5M CY identified based on borrow borings
 - Access issues due to high stages on Mississippi River
- Previously used HSDRRS Contractor Furnished Borrow List not authorized to be used for the WSLP project
- Approved to use commercially available borrow for WSLP Project
 - Sources Sought issued to identify commercial borrow sources – Closes November 5, 2020
 - Requirements to become a commercial borrow source are included in the Sources Sought solicitation
 - https://beta.sam.gov/opp/f5879b373937468f90946577861f7f8e/view?keywords=2020-WSLP&sort=-relevance&index=&is_active=true&page=1
 - www.beta.sam.gov – search “2020-WSLP”





BUILDING STRONG®
and Taking Care of People!



BUILDING STRONG®
and Taking Care of People!